

# Log Cabins 2 Go . . . No Assembly Required!

A Log Cabin 2 Go is a 400 square foot full log park model cabin that can be brought to your site for immediate enjoyment! From the steel I-Beam main frame through the metal roof, you will discover that the quality of the materials far exceeds your expectations. Don't confuse this with a park model with log siding on the exterior. A GLH Log Cabin 2 Go has full logs exterior walls and built like a real log cabin!

Base Price for All Standard 400 sq ft 6" X 8" Oak Cabins (14' tall; f.o.b. New Bloomfield, MO) \$99,900

Complete custom cabins and sizes are quoted upon request.

## Standard Features:

10" Steel I-Beam Platform Frame ♦ 2x6 SPF Floor Joists 16" o.c protected by heavy duty moisture barrier. ♦ Detachable Hitch ♦ OSB Subfloor ♦ 3/4" Solid Oak Prefinished Flooring ♦ R-13 Insulation in Floor ♦ R-13 Foam Solid Roof Insulation ♦ Solid 5" Oak Log Exterior Walls ♦ Dovetailed Log Corners ♦ Stained on the Exterior and Varnished on the Interior ♦ 2x4 Interior Walls Covered with T&G Pine ♦ Oak Custom Cabinets and Doors ♦ Rounded Edge Countertops with Backsplash Bath and Kitchen ♦ Cathedral Ceiling with 4x6 Oak Collar Ties Connecting a 4x6 Rafter and Beam Roof System ♦ 1x6 T&G Pine Ceiling ♦ 29 Gauge Maintenance Free Metal Roof ♦ Double Pane Low E Vinyl Windows trimmed in Oak ♦ 100 AMP Electrical Service ♦ 20 Gallon Electric Water Heater ♦ 60" One Piece Fiberglass Tub/Shower ♦ Ceiling Fan in Living Room ♦ Range Hood/ Microwave Above the Stove ♦ Double Bowl Stainless Steel Kitchen Sink ♦ Decorator Light Fixtures ♦ Residential Quality Bathroom Fixtures ♦ Each Cabin Includes One Steel Insulated Exterior Door trimmed in Oak, One Exterior Receptacle, up to 15 interior receptacles, one TV/Phone jack, one Exterior light, one Exterior Faucet, 30" Black electric range, 18 cubic foot black refrigerator, mirror in bath. Board & Batten on exterior gables with log siding on interior gables. (Note: prices and specifications subject to change without notice.)

## Available Options:

Sliding Glass Door to replace 3'	\$1,600.00	Electric Fireplace w/Oak Surround	\$1500.00
Sliding Glass Door Added	\$1500.00	Ice Maker for Refrigerator	\$150.00
R19 Floor/R24 Roof Insul.	\$775.00	Add'l Frost Proof Faucet	\$135.00
8' Loft	\$2000.00	Duct for HVAC & thermostat wire	\$1000.00
8'Dormer	\$2400.00	30 Gal 220 Volt Water Heater	\$300.00
Prismatic Dormer with Trap Windows	\$1800.00	Wall Mounted Heat/Air	\$1000.00
Dormer Sliding Windows (each)	\$200.00	Tankless Hot Water Heater	\$1200.00
10' Porch with Railing	\$3100.00	Washer & Dryer (incl prep)	\$2300.00
Trapezoid Glass in Gable	\$900.00	Prep for Washer & Dryer	\$345.00
Aluminum Porch Balusters	\$200.00	Shower replacing Tub	\$400.00
Additional Windows	\$350.00	Full Height Pantry/Linen Closet	\$500.00
Screened in Porch	\$800.00	Bath Medicine Cabinet	\$250.00
5 rows of logs around porch	\$1600.00	Black Dishwasher installed	\$1200.00
Additional Exterior Receptacles	\$270.00	2 Wardrobes & Window Seat	\$2500.00
Additional Interior Receptacles	\$250.00	OakBed, 2 Nightstands, WallCabinets	\$5000.00
200 AMP Service	\$300.00	Oak Ceilings & Frame Walls	\$5500.00
Add'l Ceiling Fan with Light	\$200.00	Stairs to Loft	\$450.00

## Gastineau Log Homes, Inc.

3968 Jade Rd.

Kingdom City, MO 65262

800-654-9253 or [www.oakloghome.com](http://www.oakloghome.com)

[sales@oakloghome.com](mailto:sales@oakloghome.com)



## Welcome to a new era in log cabin living!

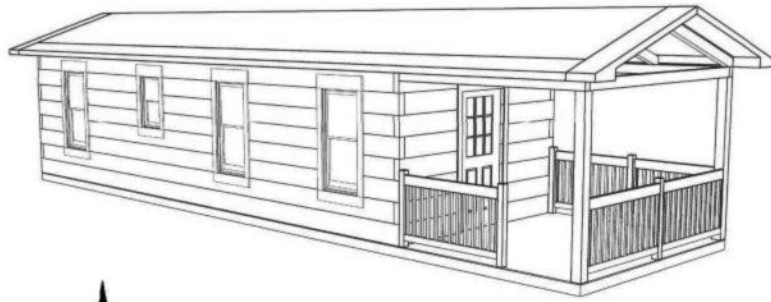
Log Cabins 2 Go (LC2GO) are a totally new concept using full log wall construction in a park model housing unit. Your Oak log cabin is manufactured in the controlled environment of a factory and is completely finished and ready to enjoy when it arrives at your site. The log construction includes dovetailed corners and the logs are sealed on the exterior and varnished on the interior. This is the only full log Oak park model available in the world!

A Log Cabin 2 Go is perfect for a weekend cabin, especially in locations where it is difficult to site build or there are property restrictions. Hunting cabins, art studios, and guest cabins are favorites also. Rental units for lakes and other recreational areas are very popular for commercial applications. Where do you want a log cabin? Why not a Log Cabin 2 Go?

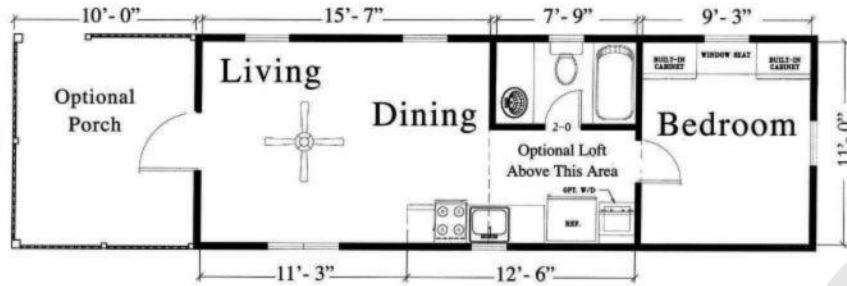
Four standard floor plans are available as a LC2GO or we can build a custom plan to your specifications! Each plan features up to 400 square feet of main level living space. Porches, lofts and other amenities can be added as per your wishes.. Doors and windows can be added or deleted as well. Custom features such as built in wardrobes, window seats and custom medicine cabinets are also available. Choose from our many options for the cabin that perfectly suits your needs.

Each unit has cathedral beamed ceilings with T&G wood car siding. All of the floors are finished with 3/4" solid Oak flooring. Each cabin has a green metal roof and is complete with a 100 amp electrical box and a 20-gallon electric water heater. The kitchen and bath are fully functional and include custom wood cabinets. Although titled as a recreational vehicle, a LC2GO feels like and is built like a true log cabin.

(Also ask to see the floor plan for the Camper Chalet with stairs to the loft!)

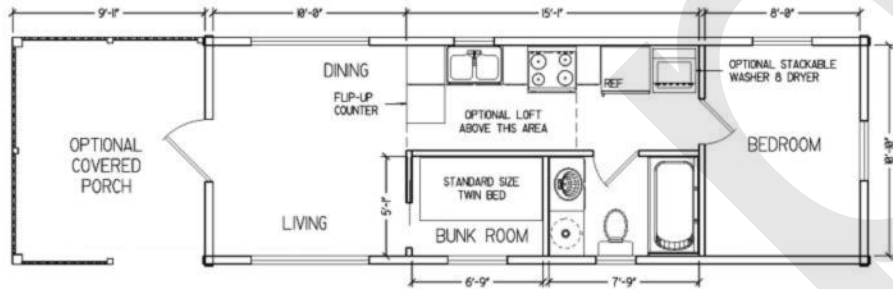


Bring the family or friends and make your own new memories in our Weekend Memories model. There's no better way to enjoy a lakeside outing!

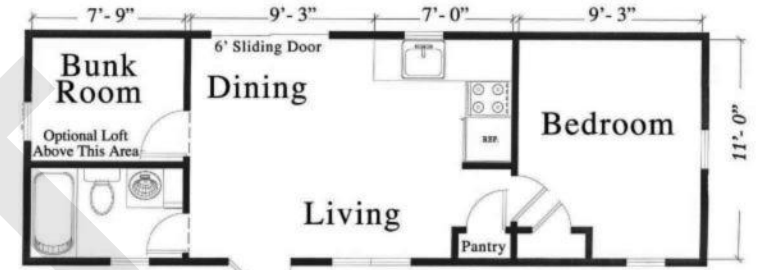


**Weekend Memories**

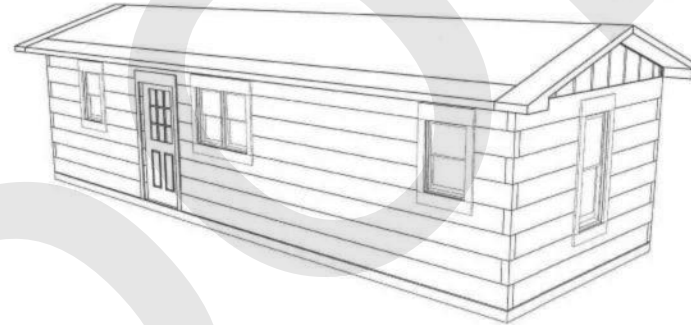
Get away from the hustle and bustle and stress of everyday life. Enjoy the peace and quiet of the great outdoors, but keep the comforts of home with our Get-Away model.



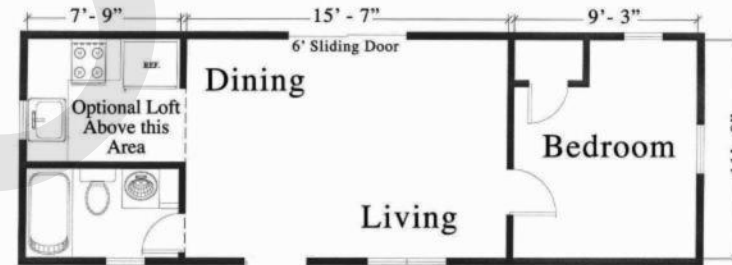
**The Get-Away**



**The Hunter's Delight**



Have your next hunting excursion with all the comforts of home. With The Hunter's Delight there's always a warm and welcome place waiting for you at the end of the day!



**The Kwik Kabin**

Your Kwik Kabin will make any trip easier and more comfortable. Forget about hassles with camp sites or hotel reservations. On your next trip, enjoy just you and the great outdoors.

